

The ultimate toolset for software development



Microsoft Visual Studio 2010 Ultimate provides an integrated environment of tools and server infrastructure that simplifies the entire application development process. Deliver business results using productive, predictable, customizable processes and increase transparency and traceability throughout the lifecycle with detailed analytics. Whether creating new solutions or enhancing existing applications, you can unleash your creativity and bring your vision to life with powerful prototyping, architecture and development tools that target an increasing number of platforms and technologies such as cloud and parallel computing. Realize increased team productivity and create high quality, low-cost solutions by using advanced collaboration features along with integrated, innovative testing and debugging tools.



Creativity Unleashed

Share your vision and build on the creative strengths of your team. Powerful prototyping, editing and visual design tools allow you to create what you can imagine. Spend less time debugging and more time creating code thanks to advanced code analysis and debugging tools. Explore new opportunities for your applications by unlocking the power of the processor on your local machine and in the cloud.

Simplicity Through Integration

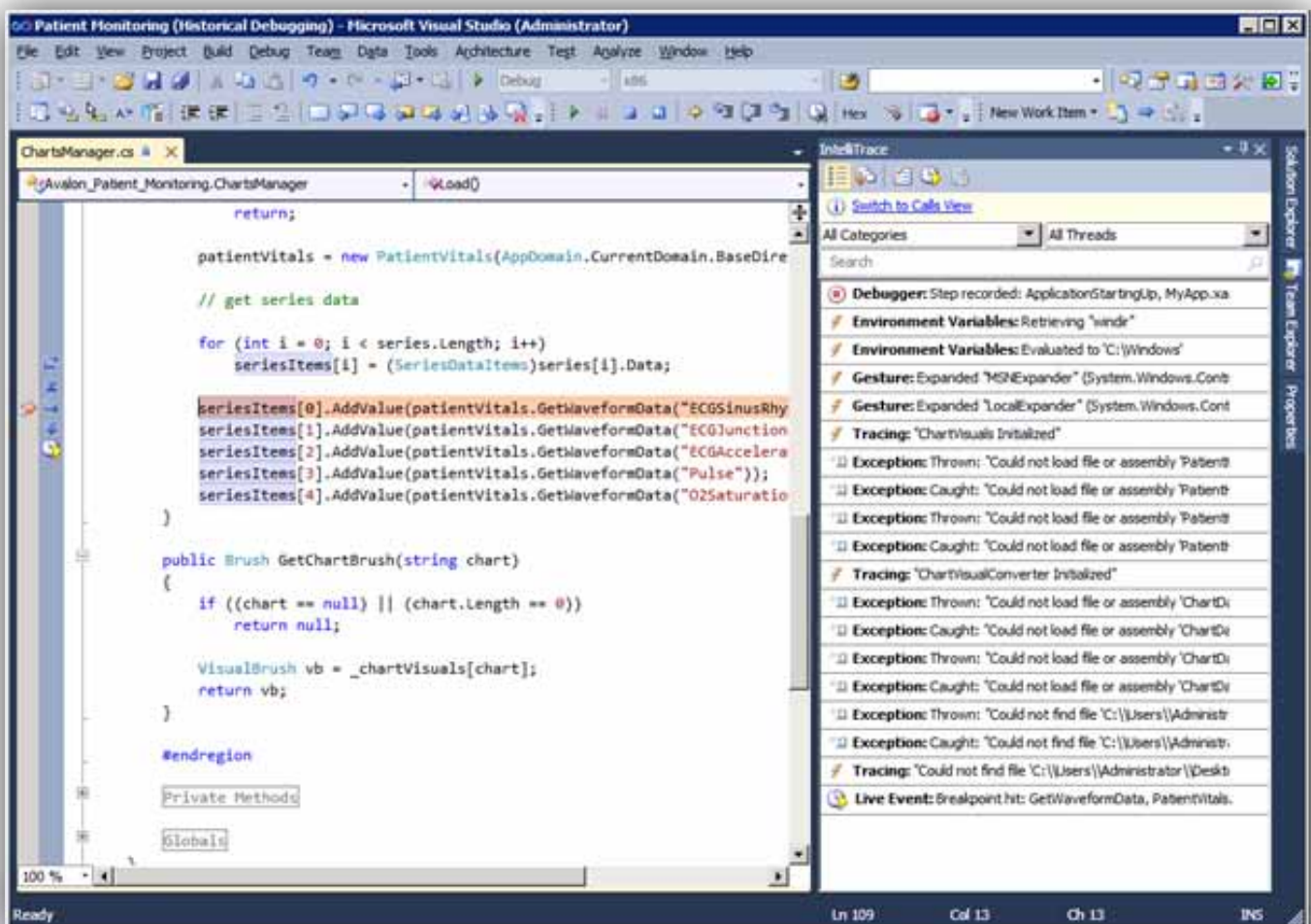
Simple and seamless, this integrated environment lets developers use existing skills to model, code, debug, test, and deploy a growing number of application types. Visual Studio 2010 Ultimate simplifies common tasks and helps all team members explore the depth of the platform and partner community.

Reliably Reproduce Issues

IntelliTrace™ makes the “no-repro” discussion a thing of the past. Testers can file rich and actionable bugs with system information including an environment snapshot that enables developers to reproduce the reported bug in the state it was found.

Quality Code Ensured

Powerful tools for managing projects, maintaining source code and finding and fixing bugs. Both testers and developers can use manual and automated testing coupled with advanced debugging tools to ensure they are building the right application, the right way.



Top ten benefits

- **IntelliTrace™ Eliminates 'No Repro'**

Easily step through code that was previously executed on the same or another machine in order to identify what happened during the code execution and significantly cut down on time spent reproducing a bug.

- **Understand Existing Architectures**

The Architecture Explorer and UML sequence diagrams help you explore and understand your existing code assets and their inter-dependencies.

- **Ensure Architectural Compliance**

Use layer diagramming to define and communicate logical application architecture and optionally enforce architecture rules with check-in policies as code is created.

- **Profile Application Performance**

Measure the performance of your applications and locate performance bottlenecks in CPU utilization, memory consumption, database interactions, Jscript/Ajax call patterns and concurrency synchronization. Use the performance profiler in conjunction with Load Testing to identify performance bottlenecks under stress and load.

- **Discover Common Coding Errors**

Code Analysis is now simple to configure with customizable rule sets that can be targeted at specific scenarios or areas of emphasis. Enforce rule sets with the code analysis check-in policy to reduce common coding errors in application or database code before they get into production.

- **Prototype User Interface Ideas Quickly**

By using SketchFlow in Expression Studio you can quickly deliver a functioning prototype that looks and feels like handwritten mockups.

- **Build Collaboration Solutions on Microsoft SharePoint®**

New support for SharePoint development, including tooling for Web Parts, Lists, Workflows, and Events and more, so you can bring great new customized collaboration tools to your company.

- **Automate User Interface Testing**

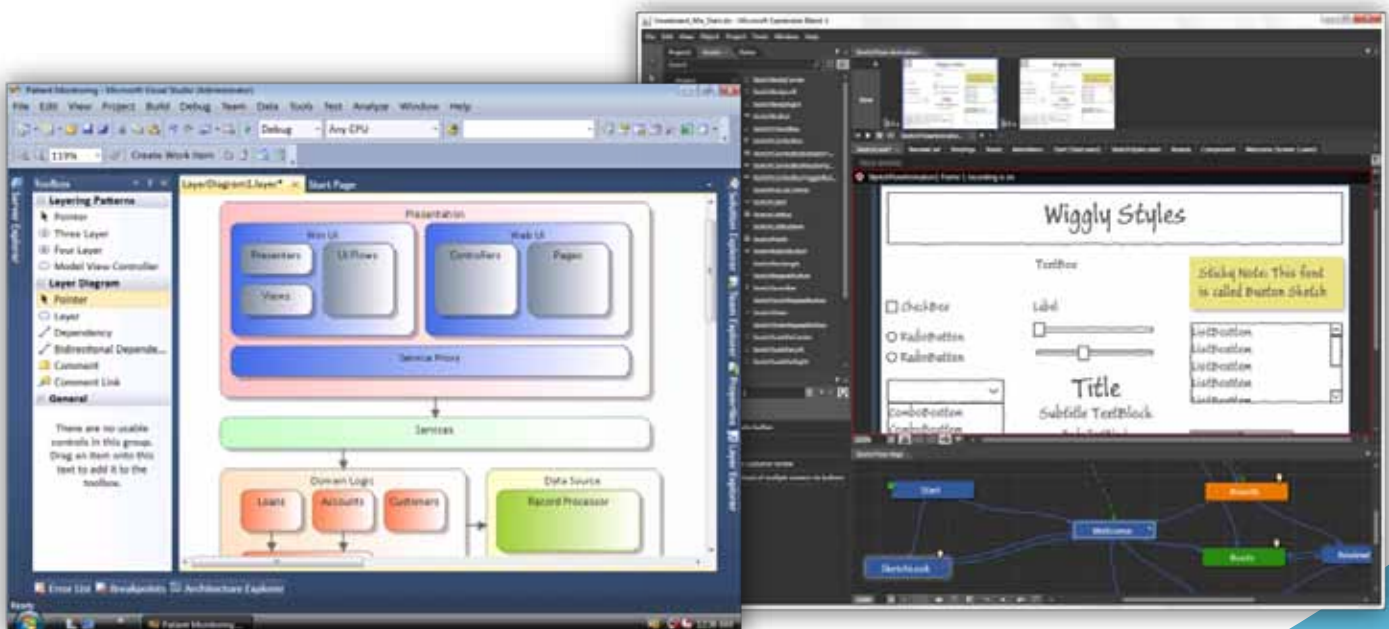
Use Coded User Interface Tests to automate the testing of UI elements in your applications. Visual Studio 2010 automatically generates test code that can be executed manually or incorporated as part of your build process to automate UI regression testing.

- **Create, Manage and Execute Tests**

Microsoft Test Manager 2010 lets you easily define your testing effort for a specific iteration in your project, run manual tests and measure your progress. In addition to creating and managing test assets like plans, suites and test cases you can also create and manage virtual lab configurations for your test environments.

- **MSDN Subscription Included**

MSDN Subscriptions are a convenient way to cost-effectively develop applications on the Microsoft platform with a simple licensing model and broad high quality information resources.



Visual Studio 2010 Feature Comparison	Visual Studio 2010			Visual Studio
	Ultimate with MSDN	Premium with MSDN	Professional with MSDN	Test Professional 2010 with MSDN
Development Platform Support				
Windows, Web and Cloud Development	•	•	•	
Office and SharePoint Development	•	•	•	
Architecture and Modeling				
Architecture Explorer, Layer Diagram and Dependency Validation	•			
Read-only diagrams (UML, Layer, DGML Graphs)	•	•		
Database Development				
Deployment, Change Management, Test Data Generation, Unit Testing	•	•		
Debugging, Diagnostics and Testing				
IntelliTrace™ (Historical Debugging), Web Performance Testing, Load Testing ¹	•			
Static Code Analysis, Code Metrics, Profiling, Code Coverage, Test Impact Analysis, Coded UI Test	•	•		
Unit Testing	•	•	•	
Test and Lab Management				
Microsoft® Test Manager, Test Case Management, Manual Test Execution, Fast Forward for Manual Testing	•			•
Virtual environment setup & tear down, Provision environment from template, Checkpoint environment through Test Manager 2010 (Visual Studio Lab Management 2010 required) ²	•			•
Team Foundation Server				
Version Control, Work Item Tracking, Build Automation, Team Portal, Reporting & Business Intelligence, Agile Planning Workbook, Team Explorer	•	•	•	•
MSDN Subscription benefits				
Priority support in MSDN Forums, MSDN Magazine, Flash newsletter, Online Concierge	•	•	•	•
Technical support incidents	4	4	2	2
Microsoft® e-learning collections (typically 10 courses or 20 hours)	2	2	1	1
Windows® Azure™ Platform	•†	•†	•†	•†
MSDN Subscription - Software for Production Use				
Microsoft® Visual Studio® Team Foundation Server 2010 plus one CAL	•	•	•	•
Microsoft® Office Professional Plus 2010, Project Professional 2010, Visio® Premium 2010, Expression Studio 3	•	•		
MSDN Subscription - Software for Development and Test Use³				
Windows (client and server operating systems), Microsoft® SQL Server®, Toolkits, Software Development Kits, Driver Development Kits	•	•	•	•
Microsoft® Office, Dynamics®, All other Servers, Windows Embedded	•	•		

† Azure benefits vary by subscription level; see the MSDN Subscription site for details: <http://msdn.microsoft.com/subscriptions/> Subject to change and subject to availability.

1. May require one or more Microsoft® Visual Studio® Load Test Virtual User Pack 2010.

2. Microsoft® Visual Studio® Lab Management 2010 is not included with Visual Studio 2010 Ultimate.

3. Per-user license allows unlimited installations and use for designing, developing, testing, and demonstrating applications.
UML is a registered trademark of Object Management Group, Inc.

This material is provided for informational purposes only. Microsoft makes no warranties, express or implied.